

CLALLAM COUNTY DCD
 EXHIBIT 16
 DATE 2/3/2022

RECEIVED
 JAN 14 2022
 CLALLAM COUNTY DEPT.
 OF COMMUNITY DEVELOPMENT

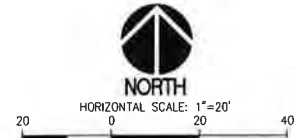
KEY NOTES
 1 6" HIGH SOLID CEDAR WOOD PERIMETER FENCE. SEE DETAIL 04/L1.01.
 FOR CL FENCING, VEHICULAR AND MAN GATES, SEE SHEET C3.01.

PLANT SCHEDULE

SYMBOL	QUANTITY	BOTANICAL NAME	COMMON NAME	SIZE/SPACING	CONDITION
	15	PIRUS CALLERYANA 'CHANTICLEER'	CHANTICLEER FLOWERING PEAR	1.5 INCH CALIPER, 20' O.C.	B&B
	25	CUPIRESSOCYPARIS LELANDII	LEYLAND CYPRESS	6 FT. HEIGHT, 20' O.C.	CONTAINER OR B&B
	15	AMELANCHER X GRANDIFLORA 'AUTUMN BRILLIANCE'	AUTUMN BRILLIANCE SERVICEBERRY	1.5 INCH CALIPER, 20' O.C.	B&B
	5	THUJA PLICATA 'HOGAN'	HOGAN RED CEDAR	6 FT. HEIGHT, 20' O.C.	CONTAINER OR B&B
	10	FRAXINUS OXYCARPA 'RAYWOOD'	RAYWOOD ASH	1.5 INCH CALIPER, 20' O.C.	B&B
	102	ARBUTUS UNEDO COMPACTA	COMPACT STRAWBERRY BUSH	4 GALLON, SPACE AT 6' O.C.	CONTAINER
	48	ABELIA 'EDWARD GOUCHER'	EDWARD GOUCHER ABELIA	4 GALLON, SPACE AT 6' O.C.	CONTAINER
	64	CISTUS OBTUSIFOLIUS	ROCK ROSE	4 GALLON, SPACE AT 4' O.C.	CONTAINER
	134	ESCALLONIA X 'NEWPORT DWARF'	NEWPORT DWARF ESCALLONIA	4 GALLON, SPACE AT 4' O.C.	CONTAINER
	54	VACCINIUM OVATUM	EVERGREEN HUCKLEBERRY	4 GALLON, SPACE AT 5' O.C.	CONTAINER
	51	MAHONIA QUIFOLIUM	TALL OREGON GRAPE	4 GALLON, SPACE AT 5' O.C.	CONTAINER
	7,977 SF	ADONISTAPHYLUS LANA-LIRSI	KIRKCONICK	1 GALLON, SPACE AT 3' O.C. TRIANGULAR SPACING	CONTAINER
	4,145 SF	COTONEASTER DAMERI	BEARBERRY COTONEASTER	1 GALLON, SPACE AT 3' O.C. TRIANGULAR SPACING	CONTAINER
	23,803 SF	TURFGRASS HYDROSEED OVER 4 INCH IMPORT TOPSOIL			
	4,961 SF	4" DEPTH CRUSHED TOP COURSE ROCK SURFACING			

1 SEE SHEET L1.01 FOR LANDSCAPE AND IRRIGATION NOTES AND LANDSCAPE DETAILS.

SITE LANDSCAPE PLAN
 SCALE: 1"=30'



811 Call 811
 two business days
 before you dig

DESIGNED: R.J.J.
 DRAWN: K.L.K.
 CHECKED: K.H.
 DATE: 11/05/2021
 SCALE: AS NOTED

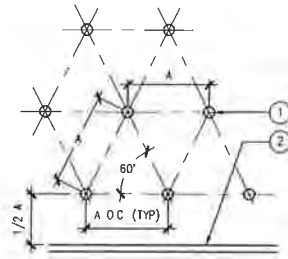
APPROVALS

PREPARED BY: **sh** sitts & hill
 CIVIL | STRUCTURAL | SURVEY
 415 CENTER STREET | TACOMA, WA 98409
 PHONE: (253) 474-4440 | FAX: (253) 474-0153
 http://www.sittshill.com

PROJECT: OLYMPIC DISPOSAL TRANSFER STATION SITE DEVELOPMENT WORK
 SHEET NO. L1.0
 PROJECT NO. 19345

PREPARED FOR: OLYMPIC DISPOSAL TRANSFER STATION
 970 CARLSBERG ROAD
 SEQUIM, WA 98382
 CONTACT: CHAD YOUNG
 PHONE: (360) 381-0375

PROJECT TITLE: SITE LANDSCAPE + SCREENING PLAN



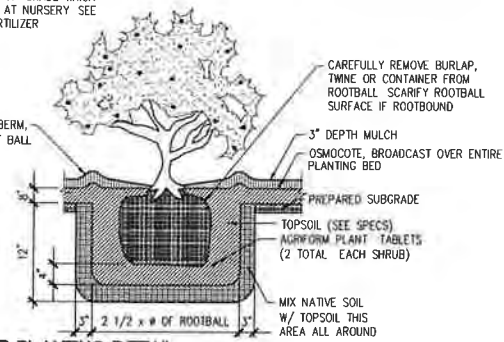
KEY NOTES:
 1 PLANT CENTERS
 2 WALL, WALK OR EDGE OF GROUND COVER PLANTING

01 TRIANGULAR SPACING OF SHRUBS AND GROUND COVERS
 SCALE: N.T.S.

NOTES:

A INSTALL SHRUB AT GRADE WHICH IT WAS GROWN AT NURSERY SEE NOTES FOR FERTILIZER

3" HIGH WATERING BERM
 2 1/2 x # OF ROOT BALL



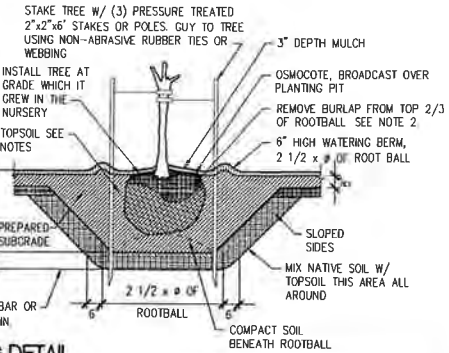
02 SHRUB PLANTING DETAIL
 SCALE: N.T.S.

NOTES:

A WHEN THE ROOTBALL IS ENCLOSED IN A WIRE BASKET SUPPORT, CUT ALL VERTICAL WIRES AFTER PLACEMENT AND ADJUSTMENT OF TREE IN THE PLANTING PIT AND PRIOR TO BACKFILLING WITH TOPSOIL.

B WHERE ROOTBALL IS WRAPPED IN PLASTIC OR TREATED BURLAP, REMOVE COMPLETELY

C WHERE TREE IS LOCATED IN TURFGRASS AREAS PROVIDE 5" DIA MULCH AREA CENTERED ON TRUNK



03 TREE PLANTING DETAIL
 SCALE: N.T.S.

LANDSCAPING NOTES

UNDERGROUND CONDITION

LOCATE UTILITY LINES AND UNDERGROUND OBSTRUCTIONS TO AVOID DAMAGE DURING CONSTRUCTION REPAIR ANY DAMAGE TO UTILITIES, BUILDING, PAVING OR OTHER WORK AT YOUR EXPENSE

LANDSCAPE AREA GRADING

FINISH SUBGRADE AND OBTAIN APPROVAL OF LANDSCAPE ARCHITECT PRIOR TO PLACING ANY TOPSOIL FINISH SUBGRADE SHALL BE SMOOTH AND CONFORM TO THE FINAL FINISH GRADE AFTER TOPSOIL PLACEMENT. ALLOW FOR ADDED TOPSOIL AND MULCH IN INDIVIDUAL PLANTINGS AS SPECIFIED. COMPACT ALL LANDSCAPE SUBGRADE TO 90% OF OPTIMUM DENSITY PER ASTM D 1557

FINISH GRADE OF PLANTING WHERE ABUTTING PAVING OR CURBS SHALL BE 1/2 INCH BELOW TOP OF PAVING. SLOPE ALL PLANTING AREAS AT A MINIMUM OF 1/4 INCH PER FOOT TO PROVIDE POSITIVE DRAINAGE AWAY FROM PLANTINGS

SOIL CONDITIONS

VERIFY EXISTING SOIL CONDITIONS FOR CONTAMINANTS THAT MAY HAVE BEEN DISCARDED BY OTHER TRADES, SUCH AS THINNER AND PLASTER REPORT FINDINGS IMMEDIATELY TO LANDSCAPE ARCHITECT

NOTIFY THE LANDSCAPE ARCHITECT OF ADVERSE SOIL DRAINAGE CONDITIONS WHICH MAY POTENTIALLY AFFECT PLANT GROWTH (E.G. SATURATED SOIL, CLAY, HARDPAN, HIGH GRAVEL OR ROCK CONTENT, CONCRETE, ETC.)

OBTAIN APPROVAL OF SUBGRADE PREPARATION PRIOR TO INSTALLING IMPORTED TOPSOIL AND COMPOSTED MULCHES

SUBSOILS SHALL BE SCARIFIED TO 6 INCH DEPTH ADD 3 INCH DEPTH OF IMPORTED TOPSOIL MIX TO SURFACE AND TILL TO DEPTH OF 6 INCH

INSTALL 8 INCH MINIMUM DEPTH TOPSOIL OVER THE PREPARED SUBGRADE TOPSOIL SHALL BE 40% PER VOLUME COMPOST AND 60% PER VOLUME SANDY LOAM THROUGH 7/16" SCREEN. PREAPPROVED MULCH SHALL BE CEDARGROVE COMPOST. PH SHALL BE FROM 6.0 TO 8.0. COMPACT TO 85% OF MAXIMUM DENSITY

SUBMIT 1 POUND SAMPLE AND SOIL ANALYSIS FROM SOIL MANUFACTURER FOR APPROVAL BY LANDSCAPE ARCHITECT. MANUFACTURED TOPSOIL SHALL PROVIDE ALL COMPONENTS NECESSARY FOR OPTIMUM PLANT GROWTH. COMPOST MUST HAVE A MINIMUM ORGANIC MATTER CONTENT OF 10% AND A CARBON TO NITROGEN RATIO BELOW 25:1

MULCHING

AFTER PLANTINGS AND CLEANING PLANTING GRADE, INSTALL 3 INCH MINIMUM DEPTH ARBORIST WOODCHIPS MULCH OVER THE TOPSOIL. DO NOT BURY PLANTS

FERTILIZER

PLANTS AND GROUND COVER: OSMOCOTE 18-6-12 FOR TOP DRESSING SHRUB AND GROUND COVER AREAS AT A RATE OF 20 LBS PER 1,000 SQUARE FEET PRIOR TO ADDING MULCH TO FINISH TOPSOIL GRADE. INSTALL AGRIFORM 20-10-15 PLANTING TABLETS FOR PLANTING PITS AS SHOWN IN PLANTING DETAILS

PLANTING

AFTER PLACEMENT OF TOPSOIL, STAKE TREE LOCATIONS FOR ACCEPTANCE BY THE LANDSCAPE ARCHITECT. MAKE REQUIRED FIELD ADJUSTMENTS AS DIRECTED. AVOID OBSTRUCTIONS. LARGE BLOCKS OF PLANTING MAY BE STAKED OUT BY BOUNDARY RATHER THAN INDIVIDUAL PLANTS. INSTALL PLANTINGS BETWEEN OCTOBER 15TH AND MARCH 15TH

LAWN BED PREPARATION AND TOPSOILING

PREPARE IN SAME METHOD AND WITH SAME MATERIALS AS PLANTING BED PREPARATION ABOVE, WITH THE DELETION OF 3 INCH DEPTH MULCH LAYER OVER FINISH TOPSOIL GRADE. APPLY LIME AT A RATE OF 100 POUNDS PER 1000 SQUARE FEET. LIGHTLY RAKE LIME AND FERTILIZER INTO FINISH TOPSOIL GRADE PRIOR TO PLANTING OR SEEDING, MOISTEN THE SOIL AND ROLL WITH A LIGHT ROLLER TO SLIGHTLY FIRM THE SURFACE

TURF ESTABLISHMENT AND MAINTENANCE

THE ESTABLISHMENT PERIOD SHALL BEGIN ON THE DATE THAT THE LANDSCAPE ARCHITECT INSPECTS AND GIVES WRITTEN PROVISIONAL ACCEPTANCE OF THE WORK AND SHALL CONTINUE UNTIL THE TURF HAS BEEN MOWED THREE TIMES. Mow TURF WHEN GRASS IS 3" HIGH TO 2" HEIGHT

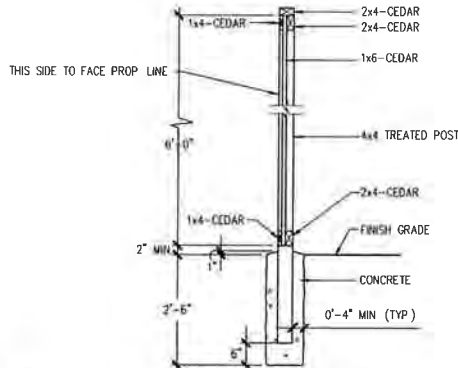
AFTER THE TURF AREA IS PLANTED, IMMEDIATELY BEGIN MAINTENANCE OPERATIONS AND CONTINUE THEM THROUGH THE ESTABLISHMENT PERIOD AND UNTIL FINAL ACCEPTANCE. INSPECT THE TURF WEEKLY AND PERFORM NECESSARY MAINTENANCE INCLUDING WATERING, FERTILIZATION, MOWING, WEED ERADICATION, OVERSEEDING AND RAKING AND SWEEPING LAWN CLIPPINGS FOR THE SITE AFTER EACH MOWING. KEEP GRASS IN A HEALTHY, GROWING CONDITION BY PERFORMING ALL OF THE ABOVE MAINTENANCE REGULARY

IRRIGATION

AUTOMATIC CONTROLLED IRRIGATION SYSTEM SHALL BE CONTRACTOR/BIDDER DESIGN/BUILD. CONNECT TO DOWNSTREAM SIDE OF DOMESTIC METER AS SHOWN ON C4.01. CONTRACTOR TO PROVIDE 1" DUCT METER AND BACKFLOW ASSEMBLY CONFORM TO CLALLUM COUNTY PUD REQUIREMENTS FOR METER AND BACKFLOW DEVICE. SYSTEM SHALL BE CAPABLE OF WINTERIZING VIA QUICK COUPLERS AND MANUAL DRAIN VALVES. LAWN AREAS SHALL BE ZONED SEPARATE FROM SHRUB/GROUND COVER AREAS. LANDSCAPE AREAS OUTSIDE OF PERIMETER FENCE SHALL BE ZONED SEPARATELY FROM ON-SITE LANDSCAPE AREAS. SUBMIT CONTRACTOR IRRIGATION DRAWINGS TO ENGINEER FOR REVIEW AND COMMENTS PRIOR TO INSTALLATION

QUALITY ASSURANCE

ALL PLANT MATERIAL TO BE IN HEALTHY THRIVING CONDITION. PROTECT ALL PLANT MATERIAL FROM HARM HEAL-IN AND WATER ALL ROOTBALLS IF NOT PLANTED THE SAME DAY AS DELIVERY. REMOVE UNSATISFACTORY MATERIALS FROM SITE. PLANT DURING PERIODS NORMAL FOR OPTIMAL GROWTH, AS DETERMINED BY SEASON, WEATHER CONDITIONS AND ACCEPTED PRACTICE



04 6' HIGH CEDAR WOOD PERIMETER FENCE
 SCALE: N.T.S.

DESIGNED	R.L.J.	CHECKED	K.H.
DRAWN	K.L.K.	DATE	11/23/2021
SCALE	AS NOTED	ISSUED FOR PERMIT	01-14-2022



sitts & hill
 CIVIL | STRUCTURAL | SURVEY
 4815 CENTER STREET | TACOMA, WA 98409
 PHONE: (252) 474-6468 | FAX: (252) 474-6153
<http://www.sitts-hill.com>

OLYMPIC DISPOSAL
 970 CARLSBERG ROAD
 SEQUIM, WA 98382
 CONTACT: CHAD YOUNG
 PHONE: (360) 381-0375

PROJECT: OLYMPIC DISPOSAL TRANSFER STATION SITE DEVELOPMENT WORK
 SHEET TITLE: LANDSCAPE NOTES AND DETAILS
 SHEET NO:

L11
 PROJECT NO: 19345



ABBREVIATIONS

(SOME ABBREVIATIONS MAY NOT BE USED ON DRAWINGS)

ABBREVIATION	DESCRIPTION	ABBREVIATION	DESCRIPTION
A or AMP	AMPERES	MCM, KCM	THOUSAND CIRCULAR MILS
AC	ALTERNATING CURRENT	MDF	MAIN DISTRIBUTION FRAME
AC	AIR CONDITIONING	MECH	MECHANICAL
AIC	AMPERE INTERRUPTING CAPACITY	MIN	MINIMUM
AL	ALUMINUM	MLO	MAIN LUGS ONLY
ARCH	ARCHITECTURAL	MOP, MOPC	MAXIMUM OVERCURRENT PROTECTION
ATS	AUTOMATIC TRANSFER SWITCH	NIC	NOT IN CONTRACT
AWG	AMERICAN WIRE GAUGE	NTS	NOT TO SCALE
BKR	BREAKER	OC	ON CENTER
BLDG	BUILDING	PA	PUBLIC ADDRESS
C	CONDUIT	PB	PULLBOX
CO	CONDUIT ONLY	Ø or PH	PHASE
CB	CIRCUIT BREAKER	PNL	PANEL
CCTV	CLOSED CIRCUIT TELEVISION	PR	PAIR
CFM	CUBIC FEET PER MINUTE	PRI	PRIMARY
CKT	CIRCUIT	PVC	POLYVINYL CHLORIDE
CLG	CEILING	RECPT	RECEPTACLE
CONC	CONCRETE	REQ	REQUIRED
CT	CURRENT TRANSFORMER	RM	ROOM
CU	COPPER	SHT	SHEET
CW	COLD WATER	SP	SINGLE POLE
DC	DIRECT CURRENT	SPD	SURGE PROTECTIVE DEVICE
DIA	DIAMETER	SPDT	SINGLE POLE, DOUBLE THROW
DIV	DIVISION	SPST	SINGLE POLE, SINGLE THROW
DPDT	DOUBLE POLE, DOUBLE THROW	SW	SWITCH
DPST	DOUBLE POLE, SINGLE THROW	SWBD	SWITCHBOARD
DWG	DRAWING	TEL	TELEPHONE
EGC	EQUIPMENT GROUND CONDUCTOR	TV	TELEVISION
ELEC	ELECTRIC	TTB	TELECOMMUNICATIONS TERMINAL BOARD
EMT	ELECTRICAL METALLIC TUBING	TYP	TYPICAL
EXST, (E)	EXISTING	UL	UNDERWRITERS LABORATORY
EV	ELECTRIC VEHICLE	UF	UNDERFLOOR
FA	FIRE ALARM	UG	UNDERGROUND
FC	FOOTCANDLE	V	VOLTS
FLA	FULL LOAD AMPS	VA	VOLT AMPERES
GFCI	GROUND FAULT CIRCUIT INTERRUPTER	VAC	VOLTS ALTERNATING CURRENT
GND	GROUND	VAR	REACTIVE VOLT AMPERES
HP	HORSEPOWER	W	WATTS
IDF	INTERMEDIATE DISTRIBUTION FRAME	WP	WEATHERPROOF
J-BOX	JUNCTION BOX	W	WITH
KV	KILOVOLTS	W/O	WITHOUT
KVA	KILOVOLT AMPERES	XFER	TRANSFER
KW	KILOWATTS	XFMR	TRANSFORMER
LT	LIGHT		
LTG	LIGHTING		
MAX	MAXIMUM		
MCA	MINIMUM CIRCUIT AMPS		
MCB	MAIN CIRCUIT BREAKER		
MCC	MOTOR CONTROL CENTER		

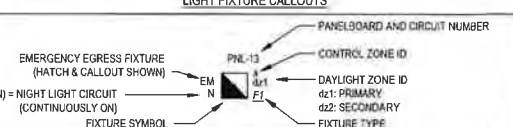
OUTLET MOUNTING HEIGHTS
(MEASURE TO CENTER OF BOX, UNLESS OTHERWISE INDICATED)

COUNTER HEIGHT (*)	+3 INCHES ABOVE SPLASH	FIRE ALARM	
CASEWORK OUTLETS	AS DIRECTED	MANUAL STATIONS	48 INCHES TO TOP
SWITCHES AND DIMMERS	48 INCHES	SIGNALING DEVICES	80 INCHES TO BOTTOM
RECEPTACLES	18 INCHES	REMOTE ALARM LIGHTS	80 INCHES TO BOTTOM
THERMOSTATS	48 INCHES	REMOTE ANNUNCIATOR	60 INCHES TO BOTTOM
OCCUPANCY SENSORS	12 FEET MAXIMUM	GRAPHIC PLAQUES	60 INCHES TO BOTTOM
DATA (COMPUTER)	18 INCHES	SECURITY	
WALL PHONE	48 INCHES	KEY PAD	48 INCHES TO TOP
TV (TELEVISION)	18 INCHES	CARD READER	48 INCHES
TV WALL MOUNTED	CENTER OF TV BRACKET	CCTV	WITHIN 6 INCHES OF CAMERA MOUNT
SPEAKERS	90 INCHES	CCTV POLE MOUNTED	16 FEET
CLOCKS	90 INCHES		
CLOCK/SPEAKER	90 INCHES, GYM OR COMMONS - 120"		
PROJECTOR	ABOVE WHITEBOARD, TO BE COORDINATED		

ELECTRICAL LEGEND

(SOME SYMBOLS MAY NOT BE USED ON DRAWINGS)

SYMBOL	DESCRIPTION
	DISTRIBUTION PANELBOARD - SURFACE PANELBOARD - EXISTING (SURFACE PANEL SHOWN)
	SWITCHBOARD OR MCC (DRAWN TO SCALE)
	DISCONNECT SWITCH
	FUSED DISCONNECT SWITCH
	MAGNETIC MOTOR STARTER OR OTHER MOTOR CONTROL DEVICE AS SCHEDULED
	DRY TYPE TRANSFORMER
	WIRING CONCEALED IN CEILING OR WALL
	WIRING CONCEALED UNDERGROUND OR BELOW FLOOR
	WIRING EXPOSED
	WIRING HOMERUN
	CONDUIT UP, DOWN
	FLEXIBLE WIRING CONNECTION
	GENERAL BUBBLE NOTE TAG SYMBOL: # - IDENTIFYING NUMBER
	SCHEDULED EQUIPMENT CONNECTION (INCLUDE ALL WIRING, DISCONNECTING MEANS, CONTROL AND OTHER REQUIREMENTS SCHEDULED)
	DETAIL SYMBOL: # - IDENTIFYING NUMBER A - SHEET WHERE DETAIL SHOWN
	REVISION CALLOUT
	FLAG NOTE
	SCHEDULED CONDUIT CALLOUT
	LIGHTING LUMINAIRE (TO SCALE ON DRAWINGS) EMERGENCY FIXTURE - TWIN HEAD COMBINATION EXIT SIGN AND TWIN HEAD EMERGENCY LIGHTING UNIT EXIT FIXTURE - CEILING EXIT FIXTURE - WALL EXIT FIXTURE WITH DIRECTION ARROWS
	LIGHT FIXTURE ON NIGHT LIGHT CIRCUIT PROVIDE UNSWITCHED HOT CONDUCTOR
	INDICATES CONTROL ZONE
	POLE MOUNTED LIGHT
	INDICATES LUMINAIRE TYPE



SYMBOL	DESCRIPTION
	LIGHTING CONTROL PHOTOCELL, EXTERIOR
	SINGLE POLE TOGGLE SWITCH
	DIGITAL SWITCH STATION
	SWITCH SUBSCRIPTS: 2 DOUBLE POLE 3 THREE WAY 4 FOUR WAY D DIMMER EP EXPLOSION PROOF K KEY OPERATED LV LOW VOLTAGE LVM LOW VOLTAGE MASTER M MANUAL MOTOR STARTER W/OVERLOADS MC MOMENTARY CONTACT P SWITCH W/PILOT LIGHT T TIMER WP WEATHERPROOF a, b, c MULTIGANG SWITCH STATION
	DAYLIGHT SENSOR - DUAL ZONE
	OCCUPANCY SENSOR
	UL924 EMERGENCY TRANSFER RELAY

SYMBOL	DESCRIPTION
	POWER ALL RECEPTACLES ARE TAMPER RESISTANT DUPLEX RECEPTACLE (NEMA 5-20R) SUBSCRIPT: IG ISOLATED GROUND DF CHILLED WATER FOUNTAIN REF REFRIGERATOR COP COPIER P PEDESTAL WP WEATHERPROOF C CEILING DW DISHWASHER P WALL MOUNT PROJECTOR TV VIDEO DISPLAY OUTLET. REFER TO ARCHITECTURAL DETAILS FOR MOUNTING HEIGHT
	FOURPLEX RECEPTACLE (NEMA 5-20R)
	DUPLEX RECEPTACLE, 1/2 CONTROLLED BY OCCUPANCY SENSOR OR TIME SWITCH
	GFCI DUPLEX RECEPTACLE (NEMA 5-20R) ASTERISK INDICATES COUNTER HEIGHT OUTLET (DUPLEX RECEPTACLE SHOWN)
	RANGE RECEPTACLE (NEMA 14-50R)
	DRYER RECEPTACLE (NEMA 14-30R)
	SPECIAL PURPOSE OUTLET (AS NOTED)
	RECESSED FLOOR BOX FOR POWER & SIGNAL
	DISCONNECT SWITCH
	FUSED DISCONNECT SWITCH
	JUNCTION BOX
	MOTOR CONNECTION
	EQUIPMENT CONNECTION SUBSCRIPT: WH WATER HEATER HD HAND DRYER WC WATER COOLER
	COMMUNICATIONS CAT 6 OUTLET WITH 1 25°C TO ACCESSIBLE SPACE AND (2) CAT 6 CABLES TO DISTRIBUTION FRAME QTY OF CAT 6 OUTLETS INDICATED W/ CAT 6 CABLE FOR EACH IF MORE THAN 2 OUTLET TO DISTRIBUTION FRAME, MIN 1 25°C TO ACCESSIBLE SPACE
	INTRUSION / ACCESS CONTROL CARD READER KEY SWITCH KEY PAD DOOR CONTACT ULTRASONIC DETECTOR CLOSED CIRCUIT TELEVISION CAMERA
	FIRE ALARM FIRE ALARM CONTROL PANEL FIRE ALARM ANNUNCIATOR MANUAL STATION HORN [SPEAKER] "C" INDICATES CEILING MOUNT HORN [SPEAKER] WITH VISUAL SIGNAL (STROBE) "C" INDICATES CEILING MOUNT HEAT DETECTOR SMOKE DETECTOR
	EXISTING WORK
	NEW WORK

GENERAL ELECTRICAL NOTES:

- SEE ARCHITECTURAL PLANS FOR LOCATION OF FIRE RATED CONSTRUCTION.
- BRANCH CIRCUIT NOTES:
 - VERIFY BRANCH CIRCUIT WIRE COUNT BEFORE PULLING CONDUCTORS. PROVIDE REQUIRED CONDUCTORS TO EACH OUTLET AND DEVICE FOR PHASE, NEUTRAL AND EQUIPMENT GROUND BASED ON CIRCUIT DESIGNATIONS SHOWN AND AS OTHERWISE INDICATED ON PLANS OR NOTE BELOW
 - FOR SWITCHED OUTLETS, PROVIDE ADDITIONAL CONDUCTOR COUNT REQUIRED FOR SWITCH LEGS TO ACCOMMODATE SWITCH CONTROL INDICATED. MAINTAIN UNSWITCHED LEG IN LIGHTING BRANCH CIRCUITS TO EXIT, EMERGENCY, AND NIGHT LIGHTING SHOWS
 - MINIMUM BRANCH CIRCUIT CONDUCTOR SIZE FOR OUTDOOR AND EXTERIOR BUILDING LIGHTING SHALL BE #10 AWG
 - PROVIDE SEPARATE NEUTRAL CONDUCTOR FOR BRANCH CIRCUITS SERVING RECEPTACLE OUTLETS UNLESS OTHERWISE INDICATED.
- MINIMUM CONDUIT SIZE FOR HOMERUNS AND FOR CONDUIT INSTALLED BELOW GRADE OUTDOORS SHALL BE 3/4 INCH.
- REFER TO ARCHITECTURAL PLANS FOR LIGHT FIXTURE LOCATIONS AND FOR MOUNTING HEIGHT OF SUSPENDED AND WALL MOUNTED LIGHT FIXTURES. REFER TO REFLECTED CEILING PLANS, INTERIOR ELEVATIONS, EXTERIOR ELEVATIONS, ROOM SECTIONS, AND DETAILS SHOWN ON ARCHITECTURAL CONTRACT DOCUMENTS PRIOR TO ROUGH-IN REPORT CONFLICTS TO ARCHITECT/ENGINEER FOR RESOLUTION.
- REFER TO ARCHITECTURAL ELEVATIONS FOR LOCATION AND MOUNTING HEIGHT OF WIRING DEVICES. REPORT CONFLICTS TO ARCHITECT/ENGINEER FOR RESOLUTION
- VERIFY EXACT LOCATION OF FLOOR BOXES AND OUTLETS LOCATED IN KNEE SPACES AND CASEWORK. OBTAIN ARCHITECT APPROVAL PRIOR TO ROUGH-IN.
- VERIFY BACK BOX REQUIREMENTS OF EQUIPMENT FURNISHED UNDER OTHER THAN DIVISION 26 OR 27 SECTIONS AND EQUIPMENT FURNISHED BY OWNER
- SEE MECHANICAL PLANS FOR QUANTITY AND LOCATION OF FIRE / SMOKE DAMPERS PROVIDE 120 VOLT CONNECTION TO EACH DAMPER
- FIRE ALARM SYSTEM IS BIDDER DESIGN. TWO COMPLETE PLANS AND SPECIFICATIONS FOR THE FIRE ALARM SYSTEM INSTALLATION OR MODIFICATION SHALL BE SUBMITTED TO AUTHORITY HAVING JURISDICTION FOR REVIEW AND APPROVAL PRIOR TO SYSTEM INSTALLATION

RECEIVED

APPROVALS
 DESIGNED
 DRAWN
 CHECKED
 DATE
 SCALE
 JAN 14 2022
 CLALLAM COUNTY DEPT. OF PUBLIC WORKS
 COMMUNITY DEVELOPMENT
 7/7/2022

SIGNED
 01/07/2022

SITTS & HILL ENGINEERS, INC.
 CIVIL • STRUCTURAL • SURVEYING
 4816 CENTER STREET | TACOMA, WA 98409
 PHONE: (253) 474-9449 | FAX: (253) 474-9153
 www.sittshill.com

OLYMPIC DISPOSAL
 970 CARLSBOURG ROAD
 SEQUIM, WA 98382
 (360) 381-0375

PROJECT: OLYMPIC DISPOSAL TRANSFER STATION
 SHEET TITLE: SITE DEVELOPMENT
 SHEET NO.:
 ABBREVIATIONS, LEGEND & GENERAL NOTES

HULTZ & BHU
engineers inc

1111 Fairwell Ave, Suite 100 | Tacoma, WA 98402
 Phone: (253) 383-3257 | Fax: (253) 383-3283
 general@hultzbhu.com | Job Number: 21-207

PERMIT - 01/07/22

E0.1

PROJECT NO.

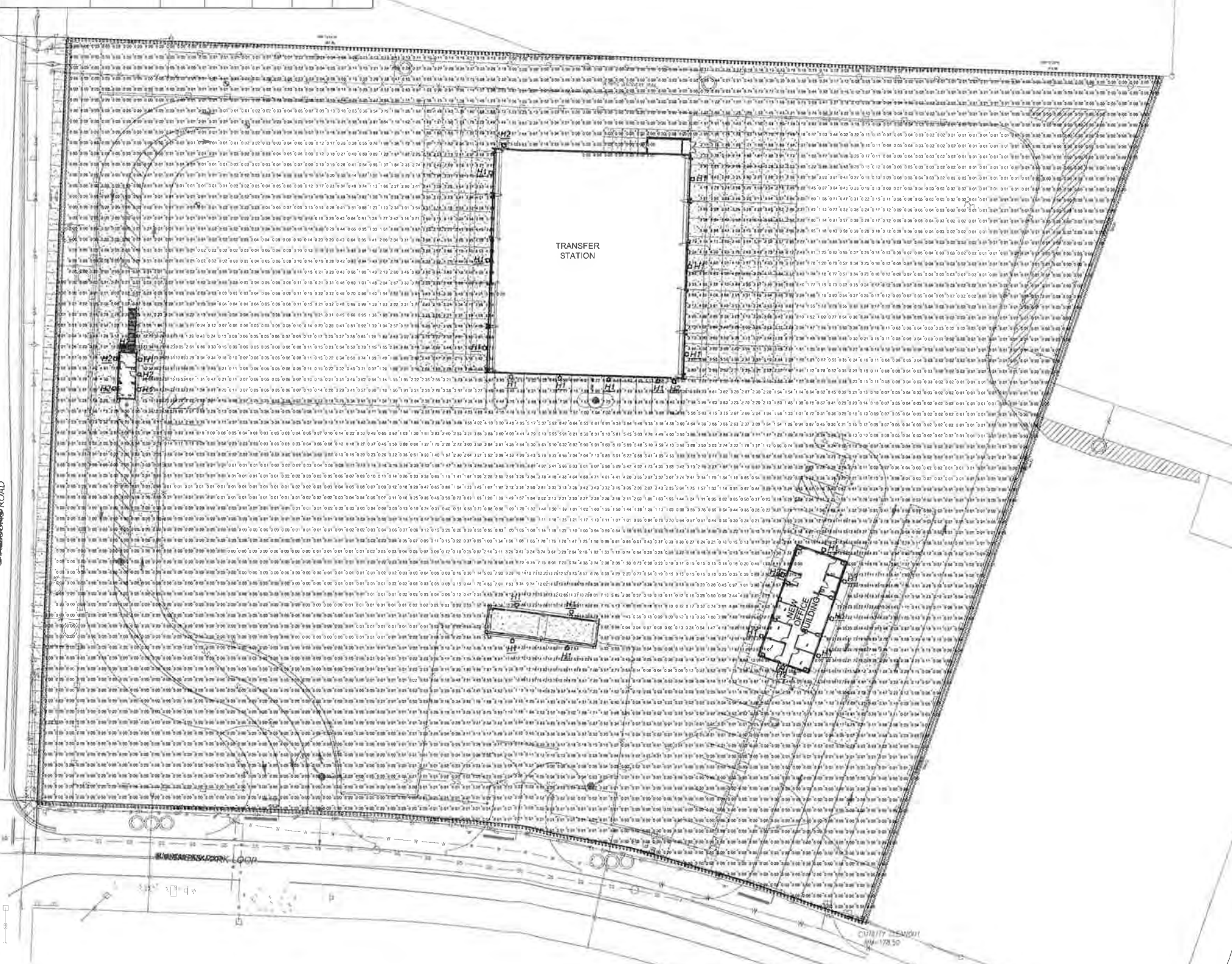
19345

Symbol	Label	Quantity	Manufacturer	Catalog Number	Description	Lamp	Number Lamps	Filename	Lumens Per Lamp	Light Loss Factor	Wattage
	H1	21	KIM LIGHTING Educational, Government, Healthcare, Hospitality, Hotel, Industrial, Institutional, Manufacturing, Pathway, Prison, Roadway, Site, Sports, Street, Direct, Wet Location	ALT1-54L-155-5K7-4	ALTITUDE 2.0	C-70-CRI DATA SHOWN IS ABSOLUTE	1	ALT1-54L-155-5K7-4 ies	17686	0.8	156
	H2	8	COOPER LIGHTING SOLUTIONS - LUMARK (FORMERLY EATON)	XTOR4B	CROSSTOUR 38W WALL MOUNT LED	EATON LED 5000K	1	XTOR4B.ies	4266	0.8	37.7

Description	Symbol	Avg	Max	Min	Max/Min	Avg/Min
East Property Line	+	0.0 fc	0.0 fc	0.0 fc	N/A	N/A
North Property Line	+	0.0 fc	0.1 fc	0.0 fc	N/A	N/A
Site	+	1.30 fc	60.59 fc	0.00 fc	N/A	N/A
South Property Line	+	0.0 fc	0.0 fc	0.0 fc	N/A	N/A
West Property Line	+	0.0 fc	0.0 fc	0.0 fc	N/A	N/A

GENERAL NOTES:

1 SEE E1.0 LIGHTING PLANS FOR EACH BUILDING FOR MOUNTING HEIGHT INFORMATION



PHOTOMETRIC SITE PLAN
SCALE: 1" = 30'-0"

HULTZ + BHU
engineers inc

1111 Fawcett Ave, Suite 100 Tacoma, WA 98402
Phone: (253) 363-3257 Fax: (253) 383-3283
general@hultzbhu.com Job Number: 21-207

PERMIT - 01/07/22

REVISIONS

DESIGNED _____ DRAWN _____ CHECKED _____ DATE _____ SCALE _____

SIGNED
01/07/22

SITTS & HILL ENGINEERS, INC.
CIVIL • STRUCTURAL • SURVEYING
4615 CENTER STREET | TACOMA, WA 98409
PHONE: (253) 474-9449 | FAX: (253) 474-0133
www.sittshill.com

PREPARED FOR
OLYMPIC DISPOSAL TRANSFER STATION
SITE DEVELOPMENT
SHEET NO. **PHOTOMETRIC SITE PLAN**

PROJECT NO. **E1.1**

19345

1/10/22 10:51:27 AM C:\Users\jdoyle\OneDrive\Documents\21-207\21-207-371 - 11 - Photometric Site Plan.dwg 01/07/22 3:00 PM by BDC

LIGHTING COMPLIANCE SUMMARY						
2018 WAC Compliance Form for Commercial Buildings including Energy 402, 403 & 404 and 7 sections and 401.01						
Project Title: Olympic Disposal - Site Development - 2018 WAC		Project Address: 970 Carlsborg Road, Sequim, WA 98282		Project No: 19345		Date: Jun 05, 2022
General Observations: All commercial buildings are required to comply with the 2018 WAC. Compliance is required for all buildings. Compliance is required for all buildings. Compliance is required for all buildings.						
Lighting Compliance Summary: Project Type: New Building. Lighting System: LED. Compliance Status: Compliant. Compliance Verification: 06/05/2022.						
Lighting Power Calculation: NEW BUILDING - EXTERIOR LIGHTING. Compliance Verification: 06/05/2022.						
Exterior Lighting Zone: 0.0000. Compliance Status: Compliant.						
Exterior Lighting Power Summary: Total Power: 1.0000. Compliance Status: Compliant.						
Exterior Lighting Power Summary: Total Power: 1.0000. Compliance Status: Compliant.						

ENERGY CODE COMPLIANCE NOTES

- MANUAL LIGHTING CONTROL: PROVIDE EACH ROOM WITH MANUAL LIGHTING CONTROL AS INDICATED. REMOTE LIGHTING CONTROLS SHALL IDENTIFY WHERE LIGHTS ARE CONTROLLED AND ON/OFF STATUS. MANUAL CONTROLS FOR SPACES NOT COVERED IN C405.2.1.2 LISTED EXCEPTIONS SHALL INCLUDE PROVISION FOR 50% LIGHT REDUCTION.
- OCCUPANCY SENSORS: PROVIDE OCCUPANCY SENSORS IN ALL CONFERENCE/MEETING ROOMS, LUNCH AND BREAK ROOMS, PRIVATE OFFICES, RESTROOMS, WAREHOUSE AND STORAGE SPACES, JANITORIAL CLOSETS, AND OTHER SPACES 300 SQUARE FEET OR LESS.
- DAYLIGHT ZONES: PROVIDE AUTOMATIC CONTROL OF PRIMARY (DZ1) AND SECONDARY (DZ2) DAYLIGHT ZONES INDICATED ON PLANS INDEPENDENT OF MANUAL LIGHTING CONTROL ZONES INDICATED.
- DAYLIGHT ZONE CONTROL: PROVIDE AUTOMATIC CONTINUOUS DIMMING CONTROL OF LIGHTS LOCATED WITHIN PRIMARY AND SECONDARY DAYLIGHT ZONES.
- SPECIFIC APPLICATION CONTROLS: PROVIDE DEDICATED CONTROL INDEPENDENT OF OTHER LIGHTING FOR THE FOLLOWING:
 - A MEANS OF EGRESS: PROVIDE AUTOMATIC CONTROL OF EGRESS LIGHTING BY MEANS OF OCCUPANCY SENSORS OR TIME CLOCK AS INDICATED. EMERGENCY LIGHTS TO HAVE UL924 RELAYS TO OVERRIDE CONTROL STATE UPON LOSS OF POWER.
 - B DISPLAY AND ACCENT LIGHTS: PROVIDE MANUAL CONTROL AS INDICATED.
 - C FIXED MOUNTED TASK LIGHTING: PROVIDE LIGHTS WITH INTEGRAL ON/OFF CONTROL AND CONTROL BY OCCUPANCY SENSOR IN SPACE.
- EXTERIOR LIGHTING CONTROL: PROVIDE AUTOMATIC CONTROL OF EXTERIOR LIGHTING USING COMBINATION OF PHOTOCELL AND ENERGY MANAGEMENT SYSTEM.
- TRANSFORMERS: DRY TYPE DISTRIBUTION TRANSFORMERS RATED 600 VOLTS OR LESS SHALL COMPLY WITH MINIMUM EFFICIENCY REQUIREMENTS OF NEMA TP-1, TABLE 4-2.
- COMMISSIONING: PROVIDE PROGRAMMING, CALIBRATION, AND FUNCTIONAL PERFORMANCE TESTING OF AUTOMATIC LIGHTING CONTROL SYSTEMS TO INCLUDE OCCUPANCY SENSORS, DAYLIGHT CONTROLS, AND TIME SWITCHES PER APPROVED COMMISSIONING PLAN. SUBMIT COMPLETED COMMISSIONING COMPLIANCE CHECKLIST (C408.1.4) FOR SIGNATURE PRIOR TO FINAL INSPECTIONS BY MECHANICAL AND ELECTRICAL INSPECTION AUTHORITIES.

SITE LUMINAIRE SCHEDULE							
TYPE	DESCRIPTION	MANUFACTURER	LAMP	VOLTAGE	INPUT WATTS	BALLAST/ DRIVER	REMARKS
H1	ARCHITECTURAL AREA LIGHT, TYPE 4 DISTRIBUTION, DIECAST ALUMINUM, WALL BRACKET MOUNTING, 30" OCCUPANCY SENSOR, SET TO 90% AND DIM TO 30% WHEN UNOCCUPIED.	HUBBELL LIGHTING (KIM) ALTI SERIES	5000K 17,500 LUMENS	MVOLT	155	0-10V	SEE INDIVIDUAL BUILDINGS FOR FINAL LOCATION.
H2	LED LOW PROFILE WALL PACK, DIE CAST ALUMINUM CONSTRUCTION, STAINLESS STEEL HARDWARE, GASKETED, ON BOARD PHOTOCELL CONTROL.	COOPER LIGHTING XTOR SERIES	5000K 4269 LUMENS	MVOLT	38		

LUMINAIRE SCHEDULE NOTES:

- LED LUMENS ARE BASED ON TOTAL ILLUMINATION OUTPUT OF THE LUMINAIRE UNLESS OTHERWISE INDICATED.
- VERIFY STEM, CHAIN, OR CABLE LENGTH WITH FIXTURE VENDOR AS REQUIRED TO ACCOMMODATE THE INDICATED MOUNTING HEIGHT MEASURED TO BOTTOM OF FIXTURE.
- LED DRIVERS FOR LOW VOLTAGE DIMMING SHALL BE 0-10 VOLTS [DIGITAL SIGNAL DIMMING INTERFACE TYPE] UNLESS OTHERWISE INDICATED.
- LED DRIVERS FOR LINE VOLTAGE DIMMING SHALL BE REVERSE PHASE ELECTRONIC LOW VOLTAGE (ELV) UNLESS OTHERWISE APPROVED BY THE ARCHITECT/ENGINEER.
- COLOR BY OWNER UNLESS NOTED OTHERWISE.

1/3/2021 10:01:20 AM Drawing Date: 10/11/2021 10:01:20 AM Drawing Title: Lighting Schedules.dwg User: ebauc. 07/12/22 11:04am by: Bruce

PERMIT - 01/07/22



1111 Fawcett Ave, Suite 100 Tacoma, WA 98402
 Phone: (253) 383-3257 Fax: (253) 383-3283
 general@hultzbhu.com Job Number: 21-207

PROJECT: OLYMPIC DISPOSAL TRANSFER STATION
 SHEET TITLE: SITE DEVELOPMENT LIGHTING SCHEDULES
 SHEET NO: E6.0
 PROJECT NO: 19345
 PREPARED BY: OLYMPIC DISPOSAL
 970 CARLSBORG ROAD
 SEQUIM, WA 98282
 (360) 381-0375
 DESIGNED BY: SITTS & HILL ENGINEERS, INC.
 CIVIL STRUCTURAL SURVEYING
 4815 CENTER STREET TACOMA, WA 98409
 PHONE: (253) 474-9448 FAX: (253) 474-0153
 www.sittshill.com
 SEAL: [Professional Engineer Seal]
 SIGNED: [Signature]
 01/07/2022
 REVISIONS: [Table]
 APPROVALS: [Table]
 ISSUE FOR PERMIT: 1/7/2022